

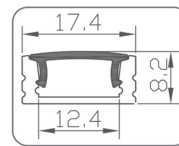
## SL-AL1707

### Surface LED Aluminum Profile



#### Specification

Material	: Anodized Aluminum AL1707
Match Flexible LED Strip	: Up to 12mm wide.
PC cover	: Frosted, Clear
Finishing	: Silver, Black
Available Lengths	: 3 meters
Dimension	: 17.4mm x 8.2mm x Length
IP Rating	: IP20
Mounting	: Surface
Installation	: Clip lock



#### Accessories



Profile x1

PC Cover x1  
Transparent  
Milky  
Frosted

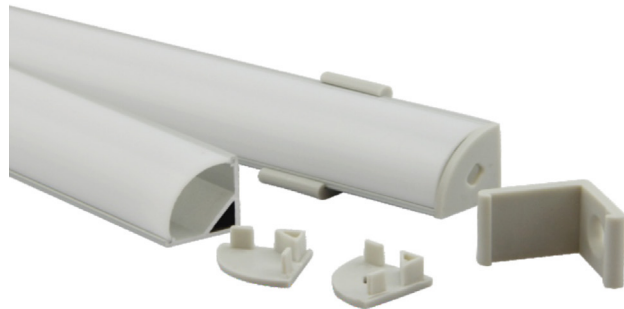
End Cap x2  
1 with hole  
1 with out hole

Metal Mounting Clip x2

Mounting Clip x2

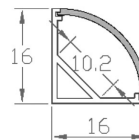
## SL-AL1616

### Corner LED Aluminum Profile



#### Specification

Material	: Anodized Aluminum AL1616
Match Flexible LED Strip	: Up to 10mm wide.
PC cover	: Frosted, Clear
Finishing	: Silver
Available Lengths	: 3 meters
Dimension	: 16mm x 16mm x Length
IP Rating	: IP20
Mounting	: Surface
Installation	: Clip lock



#### Accessories



Profile x1

PC Cover x1  
Transparent  
Milky  
Frosted

End Cap x2

Mounting Clip x2

Connector  
A) Straight corner  
B) inside corner  
C) outside corner