



Minimalistic and Low-glare Framed Structural Application LED Window Light

WL6020

Features

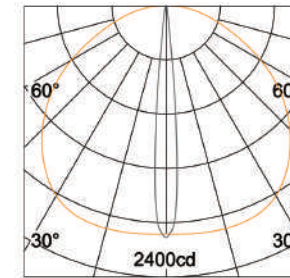
- Minimalistic appearance design
- High-precision vents for greater performance, increased durability, and higher reliability.
- High-strength aviation aluminum housing.
- Highly reliable and impact-resistant toughened glass.
- Nano-scale optical materials adopted for accurate lighting.
- Multiple options of visually comfortable and precise optical lens.
- International standard DMX512 protocol.



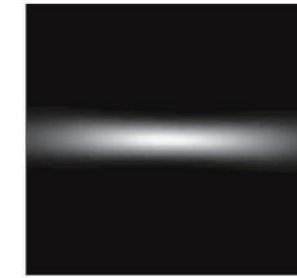
RAL7012 RAL9006 RAL9003



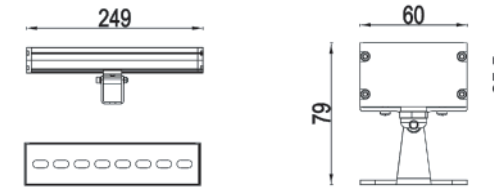
Light Distribution Curve



H (m)	E (lx)	D (m)	
		C0	C90
		120°	10°
1	2052	3.46	0.17
2	513	6.93	0.35
3	228	10.39	0.52
4	128	13.86	0.70
5	82	17.32	0.87



Dimensions



Specifications

Power Consumption	18W	15W	18W
Luminous Flux	800 lm @4000K		
Color Temperature	2700K/3000K/4000K/5000K/5700K/6500K	RGB	RGBW
Beam Angle (50%Imax)	10*120°		
LED Brand	CREE / NICHIA / OSRAM / LUMILEDS		
Input Voltage	DC24V		
Protection Class IEC	III		
Control	DMX / ON-OFF	DMX	DMX
Finish	Powder coating/Anodizing		
Housing	Extruded aluminum 6063		
Cover	Toughened glass		
IP Rating	IP66		
IK Rating	IK06		
Mounting	Adjustable bracket		
Operating Temperature	-35° C ~ 60° C (-31° F ~ 140° F)		
Storage Temperature	-40° C ~ 70° C (-40° F ~ 158° F)		
Lifespan	>50,000Hrs(Ta=35° C@L70)		
Certificate	CE / RoHS / EMC		

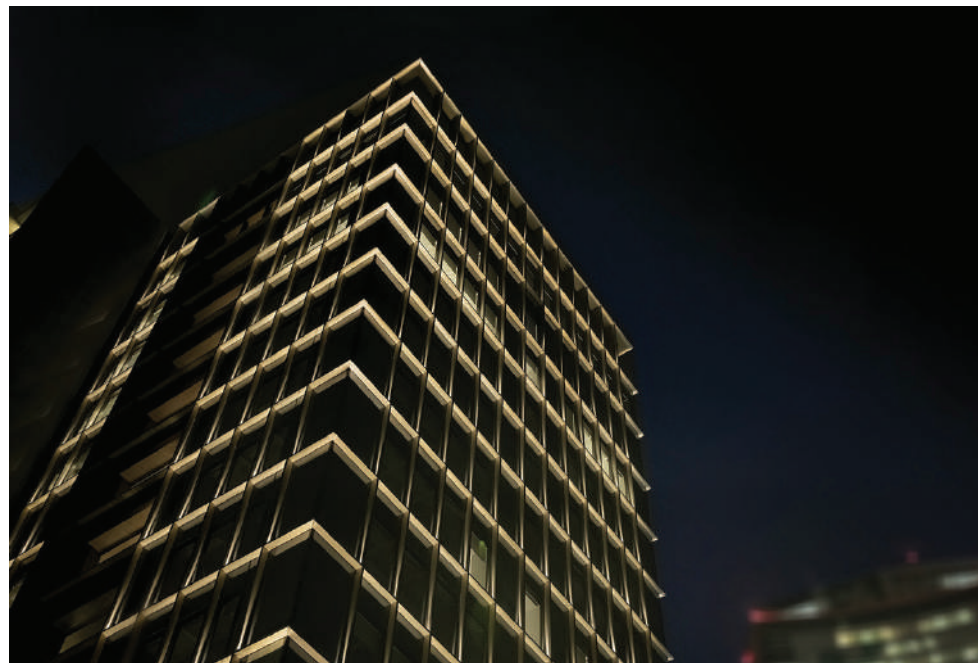


**Exquisite and Low-glare
Framed Structural Application
LED Window Light**

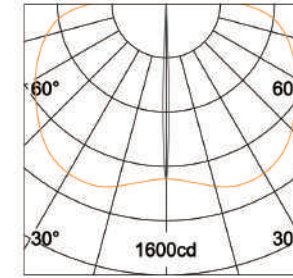
WL11308

Features

- Minimalistic and exquisite appearance design.
- High strength die cast aluminum housing.
- Self-cleaning dustproof system.
- With concealed rotary bracket.
- Arc lens with linear optical design.
- International standard DMX512 protocol.



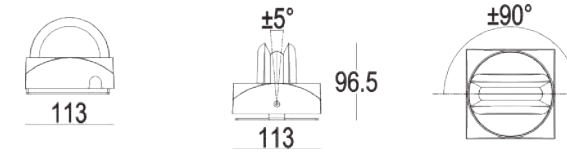
Light Distribution Curve



H (m)	E (lx)	D (m)	
		C0	C90
		170°	3°
1	1035	22.86	0.05
2	259	45.72	0.1
3	115	68.58	0.16
4	65	91.44	0.21
5	41	114.30	0.26



Dimensions



Specifications

Power Consumption	8W
Luminous Flux	160 lm @4000K
Color Temperature	2700K/3000K/4000K/5000K/5700K/6500K
Beam Angle (50%Imax)	3*170°
LED Brand	CREE / NICHIA / OSRAM / LUMILEDS
Input Voltage	DC24V
Protection Class IEC	III
Control	DMX / ON-OFF
Finish	Powder coating/Anodizing
Housing	Die cast aluminum ADC12
Cover	PMMA
IP Rating	IP66
IK Rating	IK10
Mounting	Adjustable bracket
Operating Temperature	-35° C ~ 60° C (-31° F ~ 140° F)
Storage Temperature	-40° C ~ 70° C (-40° F ~ 158° F)
Lifespan	>50,000Hrs(Ta=35° C@L70)
Certificate	CE / RoHS / EMC