

**Minimalistic and Tuff
1~3m Height Application
LED Inground Light**

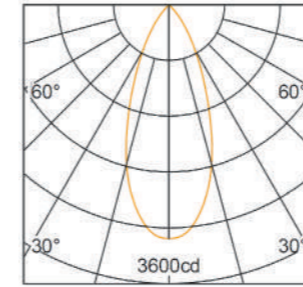
IGF2024

Features

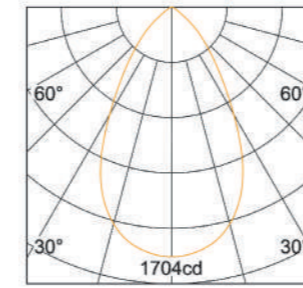
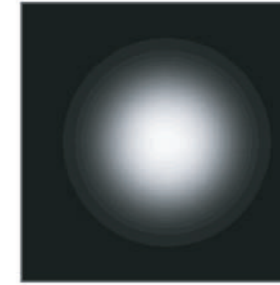
- Minimalistic appearance design
- High-strength aviation aluminum housing.
- Highly reliable and impact-resistant toughened glass.
- Humanized anti-glare optical design.
- Multiple options of visually comfortable and precise optical lens.
- Intelligent stepless dimming technology adopted.



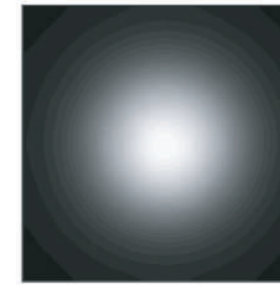
Light Distribution Curve



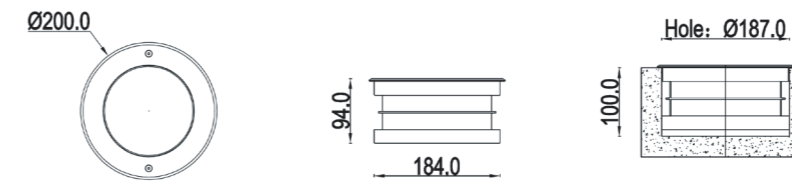
H (m)	E (lx)	D (m)
		45°
1	3107	0.83
2	754	1.66
3	335	2.48
4	189	3.31
5	121	4.14



H (m)	E (lx)	D (m)
		60°
1	1537	1.15
2	384	2.31
3	171	3.46
4	96	4.62
5	61	5.77



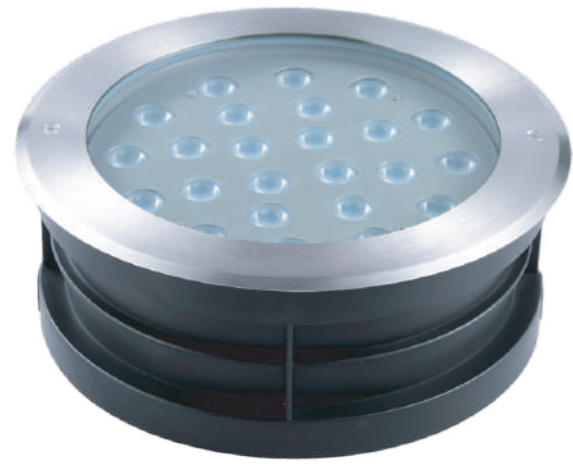
Dimensions



Specifications

Power Consumption	24W	24W	24W
Luminous Flux	1800 lm @4000K		
Color Temperature	2700K/3000K/4000K/5000K/5700K/6500K	RGB	RGBW
Beam Angle (50%Imax)	15° /23° /30° /45° /60° /18*43°		
LED Brand	CREE / NICHIA / OSRAM / LUMILEDS		
Input Voltage	DC24V / AC220V		
Protection Class IEC	III/I		
Control	DMX / ON-OFF	DMX	DMX
Finish	Powder coating		
Housing	Die cast aluminum ADC12		
Cover	304 Stainless steel+Toughened glass		
IP Rating	IP67		
IK Rating	IK10		
Mounting	Installation of embedded parts		
Operating Temperature	-35° C ~ 60° C(-22° F ~ 122° F)		
Storage Temperature	-40° C ~ 70° C(-40° F ~ 158° F)		
Lifespan	>50,000Hrs(Ta=35° C@L70)		
Certificate	CE / RoHS / EMC		





**Minimalistic and Tuff
3~5m Height Application
LED Inground Light**

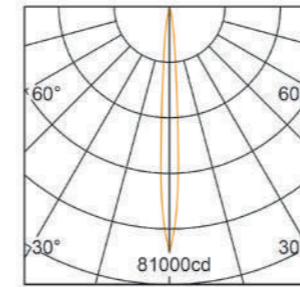
IGF2536

Features

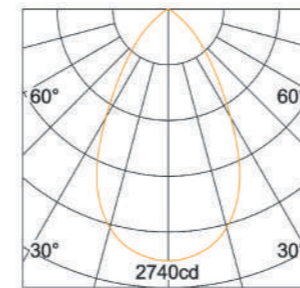
- Minimalistic appearance design
- High-strength aviation aluminum housing.
- Highly reliable and impact-resistant toughened glass.
- Humanized anti-glare optical design.
- Multiple options of visually comfortable and precise optical lens.
- Intelligent stepless dimming technology adopted.



Light Distribution Curve



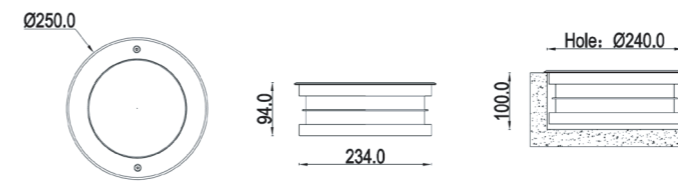
H (m)	E (lx)	D (m)
		8°
1	71596	0.14
2	17899	0.28
3	7955	0.42
4	4475	0.56
5	2864	0.70



H (m)	E (lx)	D (m)
		60°
1	2471	1.15
2	618	2.31
3	275	3.46
4	154	4.62
5	99	5.77



Dimensions



Specifications

Power Consumption	36W	36W	36W
Luminous Flux	2700 lm @4000K		
Color Temperature	2700K/3000K/4000K/5000K/5700K/6500K	RGB	RGBW
Beam Angle (50%Imax)	8° /15° /30° /45° /60°		
LED Brand	CREE / NICHIA / OSRAM / LUMILEDS		
Input Voltage	DC24V / AC220V		
Protection Class IEC	III/I		
Control	DMX / ON-OFF	DMX	DMX
Finish	Powder coating		
Housing	Die cast aluminum ADC12		
Cover	304 Stainless steel+Toughened glass		
IP Rating	IP67		
IK Rating	IK10		
Mounting	Installation of embedded parts		
Operating Temperature	-35° C ~ 60° C(-22° F ~ 122° F)		
Storage Temperature	-40° C ~ 70° C(-40° F ~ 158° F)		
Lifespan	>50,000Hrs(Ta=35° C@L70)		
Certificate	CE / RoHS / EMC		

