

## BASIC INFORMATION

The 2TR busbar is designed specifically for the installation of track lights. Connection of luminaires to the track busbar is carried out using a special adapter. The adapter allows you to mount the luminaire at any location on the busbar and provide a reliable electrical connection.

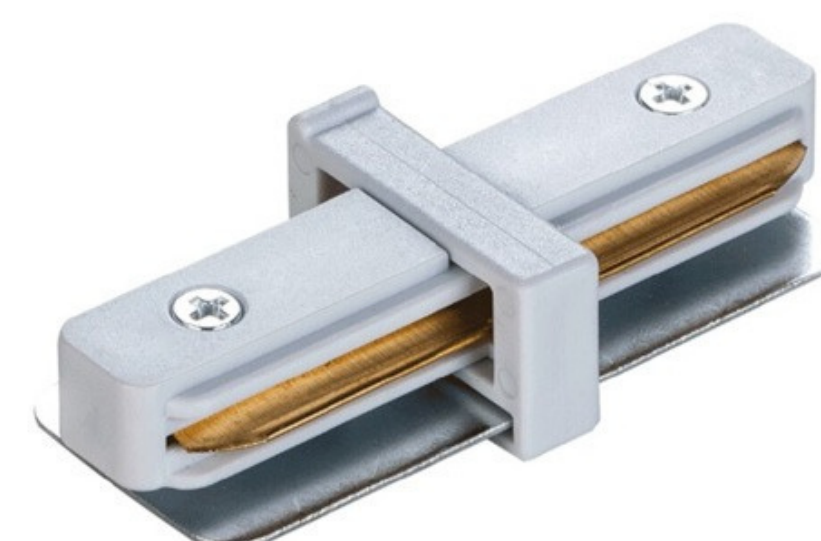
To organize a branched power line with a complex topology, special connectors are provided: L-, T-, X- and I-shaped.

The connector is internal. Used to directly connect two busbars.

025272 Internal connector LGD-2TR-CON-MINI-WH (C) 023117

Internal connector LGD-2TR-CON-MINI-BK (C)

Housing: ABS plastic, contacts: copper.



Angled connector. Used to connect two busbars at an angle of 90°.

023112 Angled connector LGD-2TR-CON-L-WH (C)

024042 Angled connector LGD-2TR-CON-L-BK (C)

Housing: ABS plastic, contacts: copper.



T-shaped connector. Used to connect 3 busbars at right angles.

023115 Triple connector LGD-2TR-CON-T-WH (C)

022777 Triple connector LGD-2TR-CON-T-BK (C)

Housing: ABS plastic, contacts: copper.

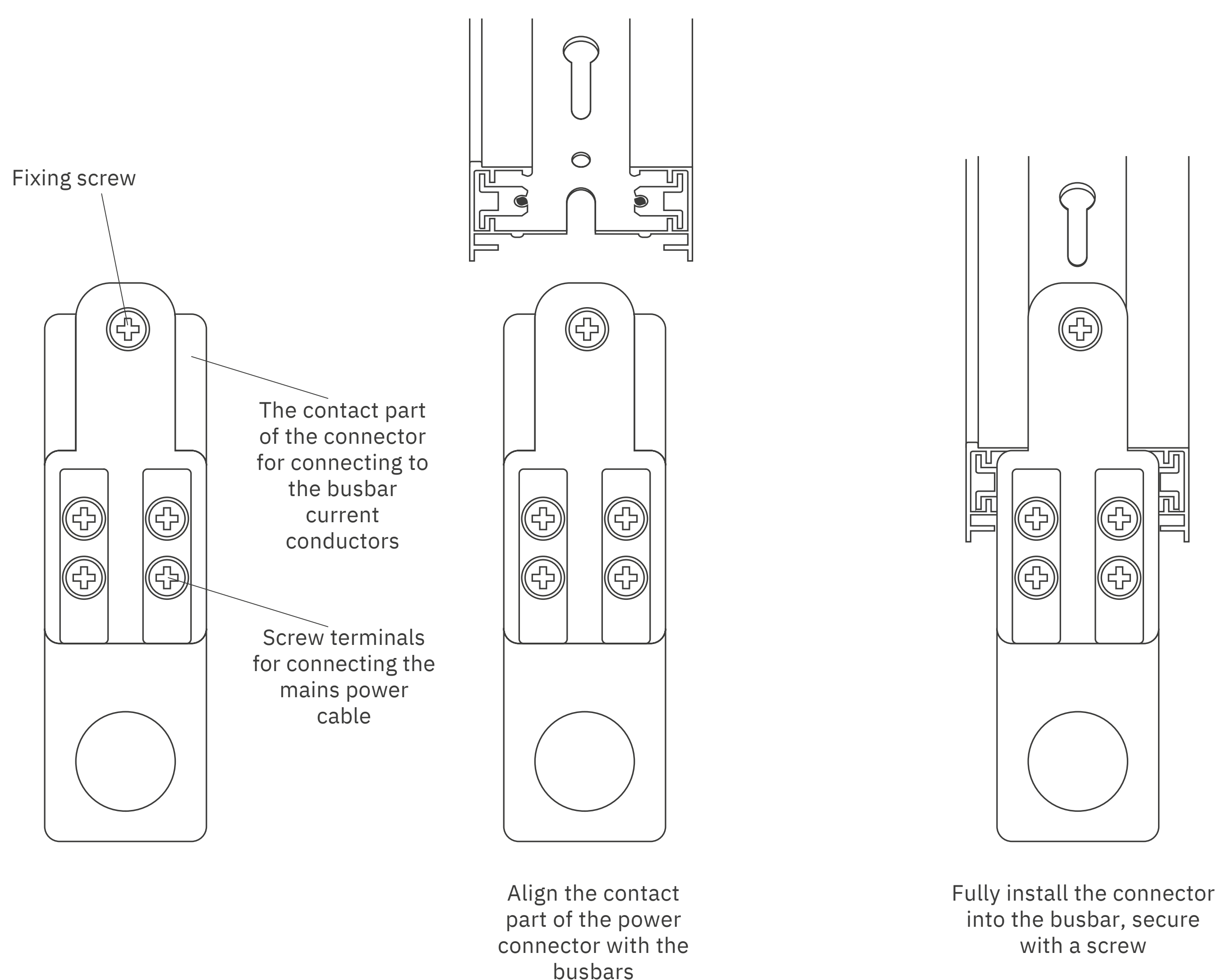
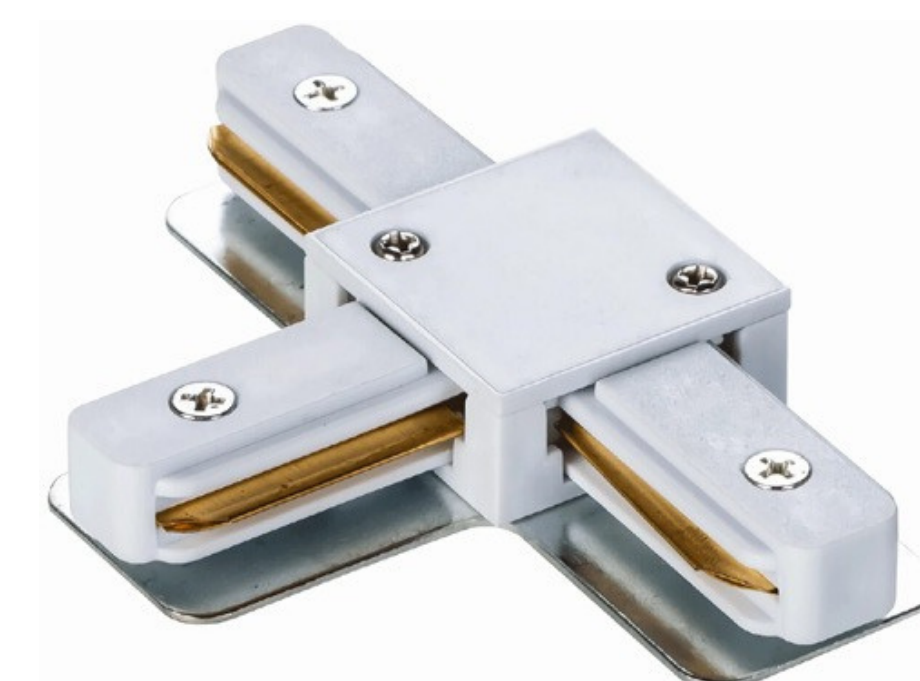


Figure 2. Connector design for connecting to mains voltage.