

# LED Gas Station Canopy Light



## SL-GS-01-G7

โคมกันระเบิด สำหรับติดตั้งพื้นที่เพดานสูง เช่น โรงงาน  
ปั๊มน้ำมัน และ โรงกลั่น เป็นต้น



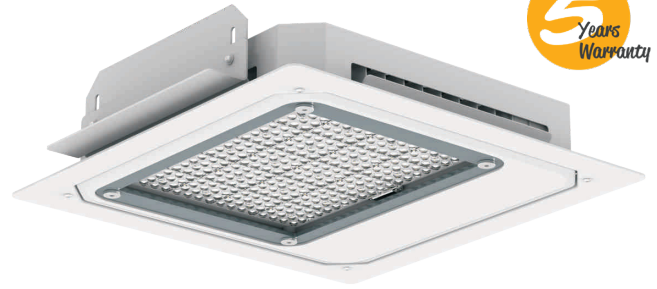
### Better solutions for Led Gas Station Canopy Light

- IP65 water-proof
- Easy Installation

- AC100-277V 50/60Hz
- 140Lm/w

Operating Temp.: -40°C~+50°C

Storage Temp.: -40°C~+50°C



### Options

Driver	Voltage	CCT
Sosen Driver	AC100-277V	3000K 4000K 5000K 5700K

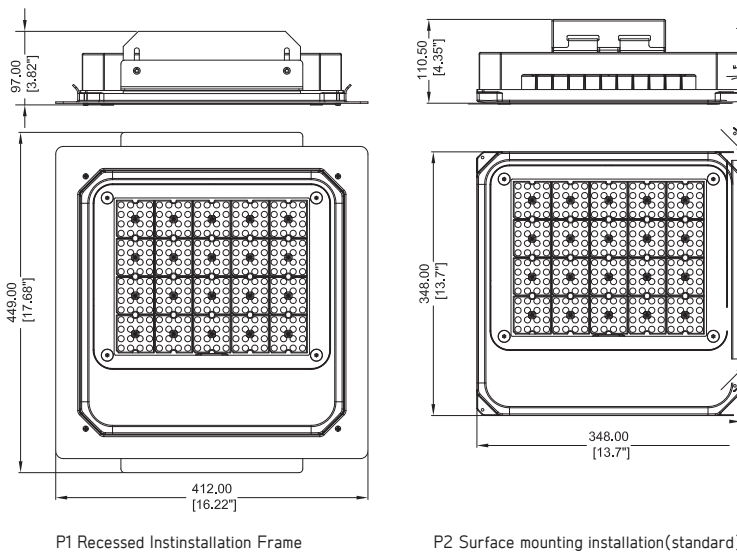
### Application

The LED Gas Station Light provides a energy saving solution to a wide spectrum of applications including , but not limited to security lighting in schools,office, complexes , light commercial development , apartments , parking garages, entryways,and stairwells. It also can be used in workshop,warehouse,parking lot,toll gate , gas station , supermarket , exhibition hall , gym and other places.

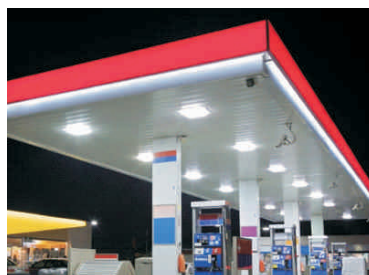
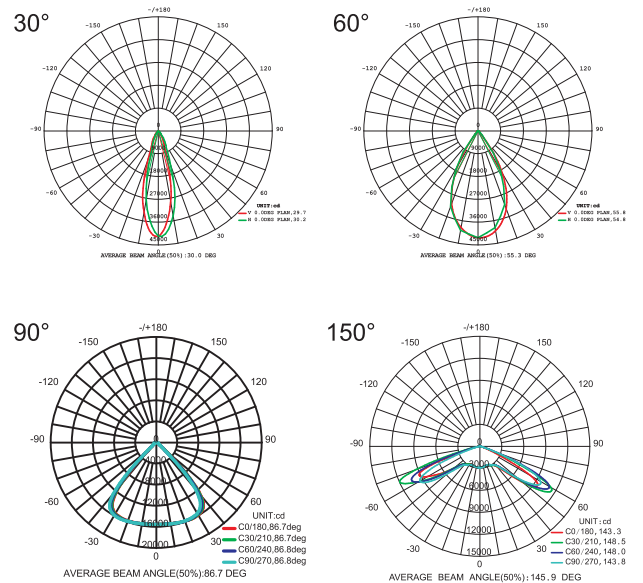
### Specifications

Item	Power	Luminous Efficacy	Leds	CRI	Weight	Beam Angle
SL-GS80W-01-G7	80W	140lm/W	Lumileds 2835	> 80	7.80kg(17.2lbs)	30°/60°/90°/150°
SL-GS100W-01-G7	100W	140lm/W	Lumileds 2835	> 80	7.80kg(17.2lbs)	30°/60°/90°/150°
SL-GS120W-01-G7	120W	140lm/W	Lumileds 2835	> 80	7.80kg(17.2lbs)	30°/60°/90°/150°
SL-GS150W-01-G7	150W	140lm/W	Lumileds 2835	> 80	7.80kg(17.2lbs)	30°/60°/90°/150°

### Dimensions(mm)



### Photometry



# LED Gas Station Canopy Light



SL-GS-01-G7

## Model Options

P1

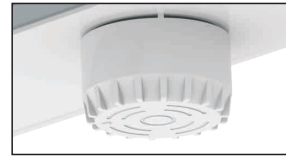


P2



## Microwave Motion Sensor Options

(Extra Remote Control Options)  
Only for TUV,UL List Driver



Default Setting:  
Detection area: 100%,  
Hold time: 5 seconds,  
Daylight threshold: 50lx,  
Stand-by dimming level: 50%,  
Stand-by period: 10 seconds

## Installation and use

### P1 Recessed Installation Frame

<p>01</p> <p>Hole Diameter : Max 400x400mm Min 370x370mm</p>	<p>02</p>	<p>03</p>
<p>04</p> <p>Brown(Black) -- L Blue(White) -- N Green/Yellow -- GND</p>	<p>05</p>	<p>06</p>

### P2 Surface mounting installation(standard)

<p>01</p> <p>d1 Ø6mm L2 160mm L1 120mm</p>	<p>02</p>	<p>03</p>
<p>04</p> <p>Brown(Black) -- L Blue(White) -- N Green/Yellow -- GND</p>	<p>05</p>	<p>06</p>

## Packing Spec

Item	Box			Carton		
	Measurement(mm)	Gross weight	Pcs/box	Measurement(mm)	Gross weight	Pcs/box
GS80W~150W-01-G7-P1	L480*W460*H165	9kg(19.8lbs)	1	/	/	/
GS80W~150W-01-G7-P2	L420*W420*H175	7.5kg(16.5lbs)	1	/	/	/