

# RL Series

LED tri- proof light with internal switch





RL2



RL4

## Certifications:

- ◆ ATEX Marking:
  - ◆  II 2G Ex db eb mb IIC T6/T5 Gb
  - ◆  II 2D Ex tb IIIC T80°C/T95°C Db IP66
- ◆ IECEx Marking:
  - ◆ Ex db eb mb IIC T6/T5 Gb
  - ◆ Ex tb IIIC T80°C/T95°C Db IP66
- ◆ Ambient Temperature:
  - ◆ (-40°C to +40°C)
  - ◆ (-40°C to +55°C)
  - ◆ (-40°C to +65°C)
- ◆ IP66

## Key Features:

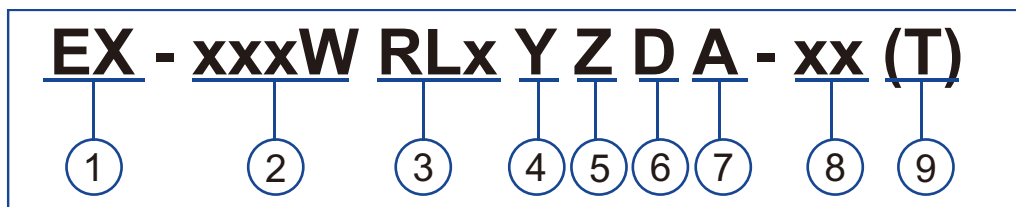
- 1 Backup battery is optional.
- 2 AC or DC power supply is available.
- 3 GRP body and PC cover.
- 4 Heavy-duty and high impact resistance.
- 5 High-quality SMT LED and Meanwell driver.
- 6 Water-proof, vapor-proof, dust-proof, and corrosion resistant.
- 7 5-year warranty.

## Application :

- ◆ Oil and gas industry
- ◆ Ocean, marine and aerospace field
- ◆ Chemical industry
- ◆ Metal treatment
- ◆ Food and alcohol industry
- ◆ Other high humidity, high dust, high temperature, vapor locations

## LED Explosion Proof Light - RL Series

### Catalog Number Logic:



- |   |  |   |
|---|--|---|
| <p>① <b>PRODUCT CATEGORY</b></p> <ul style="list-style-type: none"> <li>◆ Explosion proof product</li> </ul>                            | <p>② <b>WATTAGE</b></p> <ul style="list-style-type: none"> <li>◆ 10W-60W</li> </ul>  | <p>③ <b>PRODUCT CODE</b></p> <ul style="list-style-type: none"> <li>◆ RL2</li> <li>◆ RL4</li> </ul>   |
| <p>④ <b>DIMMING FUNCTION</b></p> <ul style="list-style-type: none"> <li>◆ Y=D: Dimmable</li> <li>◆ Y=N: Non-dimmable</li> </ul>         | <p>⑤ <b>CCT</b></p> <ul style="list-style-type: none"> <li>◆ 2700K-6500K</li> </ul>  | <p>⑥ <b>BEAM ANGLE</b></p> <ul style="list-style-type: none"> <li>◆ D40= 40°</li> <li>◆ D60= 60°</li> <li>◆ D90= 90°</li> <li>◆ D120= 120°</li> </ul> |
| <p>⑦ <b>PC COVER INFORMATION</b></p> <ul style="list-style-type: none"> <li>◆ A=C: Clear cover</li> <li>◆ A=F: Frosted cover</li> </ul> | <p>⑧ <b>EMERGENCY OPTION</b></p> <ul style="list-style-type: none"> <li>◆ EM: emergency function</li> <li>◆ Blank: without emergency function</li> </ul> | <p>⑨ <b>LIGHT SOURCE</b></p> <ul style="list-style-type: none"> <li>◆ Blank: LED plate</li> <li>◆ T: light tube</li> </ul>                            |

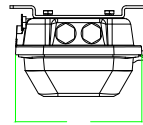
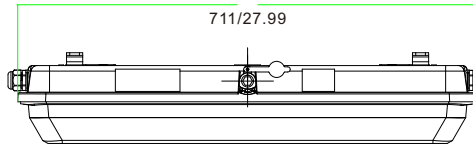
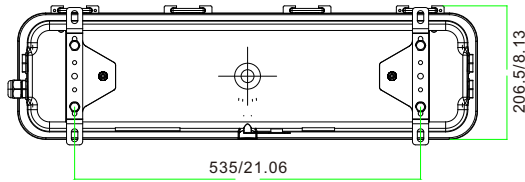
### Technical Data:

Model	Power	Fixed Power in Emergency Mode	Lumens (lm)	Fixed Lumens in Emergency Mode (lm)	Efficiency (lm/W)	Voltage	CRI	CCT	Emergency Time
EX-10W RL2YZDA-xx(T)	10W	10W	1,300	1200	130	AC100-277V 50/60Hz	>70	2700K-6500K	180 minutes
EX-12W RL2YZDA-xx(T)	12W		1,560						
EX-15W RL2YZDA-xx(T)	15W		1,950						
EX-18W RL2YZDA-xx(T)	18W		2,340						
EX-20W RL2YZDA-xx(T)	20W		2,600						
EX-25W RL2YZDA-xx(T)	25W		3,250						
EX-30W RL2YZDA-xx(T)	30W		3,900						
EX-36W RL2YZDA-xx(T)	36W		4,680						
EX-40W RL2YZDA-xx(T)	40W		5,200						
EX-20W RL4YZDA-xx(T)	20W		2,600						
EX-25W RL4YZDA-xx(T)	25W		3,250						
EX-30W RL4YZDA-xx(T)	30W		3,900						
EX-36W RL4YZDA-xx(T)	36W		4,680						
EX-40W RL4YZDA-xx(T)	40W		5,200						
EX-48W RL4YZDA-xx(T)	48W		6,240						
EX-50W RL4YZDA-xx(T)	50W		6,500						
EX-54W RL4YZDA-xx(T)	54W		7,020						
EX-60W RL4YZDA-xx(T)	60W		7,800						

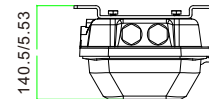
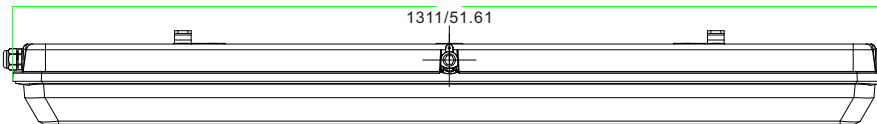
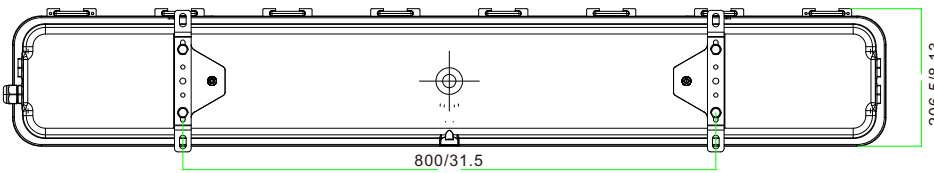
# LED Explosion Proof Light - RL Series

## Dimensions:

Unit:mm/inch



RL2: 27.99x8.13x5.53inch



RL4: 51.61x8.13x5.53inch

## Packing Information:

Model	Quantity/Carton	Packing Size	Net Weight	Gross Weight
RL2	1 PCS	800x250x170mm [31.5x9.84x6.7inch]	4 kgs/ 8.82 lbs	5 kgs/ 11.02 lbs
RL4	1 PCS	1400x250x175mm [55.12x9.84x6.89inch]	8 kgs/ 17.64 lbs	10.7 kgs/ 23.59 lbs

## Photometry:

Beam angle: 120°

